



ISSUE 12 / DEC 17

PERSPECTIVES™



LONDON | MONACO



MAYFAIR AWARDS 2017

The Mayfair Awards 2017 took place on the 27th of November at the Royal Academy of Arts on Piccadilly. Fast becoming an unmissable event on the festive season's calendar, the Mayfair Awards stand out even amongst the many sparkling celebrations that herald the approach to Christmas and the New Year. In 2017, the highly anticipated awards ceremony moved from the Ritz London, its previous home for several years, to the Royal Academy for the first time.



In describing the significance of this annual event, now in its sixth year, Hannah Lemon, Editor of *The Mayfair Magazine*, which organises the awards, said: "Each year *The Mayfair Awards* highlight and pay tribute to the creativity and talent of Mayfair's outstanding businesses, institutions and individuals, who help to make this one of the most renowned and sought-after communities in the world. This year, we were delighted, once again, to put on these awards in conjunction with a judging panel made up of leading lights of the community and our headline sponsor, Pastor Real Estate."

As noted above, 2017 marked a milestone in the continued growth and evolution of the Mayfair Awards, bringing with it an exciting change of location from the Ritz London to the Royal Academy. "We hosted *The Mayfair Awards* at the Royal Academy of Arts this year," explained Hannah Lemon, "an institution with which we have worked closely in the last years. With its rich history of nurturing the UK's finest artists, the Royal Academy has a wonderful synergy with our celebration of local creativity from local businesses and individuals at *The Mayfair Awards*."

David Lee, Head of Sales at Pastor Real Estate and a judge on the awards panel, agreed with Hannah's assessment about the pivotal role these awards play in expressing gratitude and recognition for the abundance of talent and ingenuity that sets Mayfair apart. "At Pastor Real Estate," David remarked, "we were proud and privileged to continue our sponsorship of the *Mayfair Awards* in 2017. Our support of this event reflects not only our strong and ongoing commitment to the local area, but also our appreciation for the people that make Mayfair so unique and impressive." David went on to commend the trailblazing skills and spirit that characterise this area, often leaving other locales struggling to catch up and attempting to emulate its success. He observed, "Whatever line of business you look at, Mayfair undoubtedly is at the forefront."

By all accounts, the move to the new venue was a success. Together, Mayfair's pre-eminent businesspeople, residents and investors spent an evening celebrating the creativity and excellence that Mayfair embodies in a fitting choice of location. The Royal Academy is itself a testament to creative enterprise of the highest standards. A renowned Mayfair institution in its own right, the Royal Academy showcases some of the world's priceless works of art and, each year, attracts thousands of art lovers from across the globe.

Each of the award recipients of this year's Mayfair Awards was recognised and rewarded for their specific achievements within their particular craft, business or role in the community, demonstrating the very pinnacle of service, talent and distinction that characterises Mayfair. The whole team at Pastor Real Estate would like to extend our congratulations to every one of the awards winners and to commend them for, each in their own unique ways, helping to make Mayfair an internationally coveted area.

The Mayfair Award Winners 2017

- Best Exhibition at an Art Gallery - David Hockney
- Best Independent Fashion Boutique - Jenny Packham
- Best Hotel Suite - The Royal Suite at Claridge's
- Best Interiors Boutique - Mayfair Design Studio
- Best Perfumer - Penhaligon's
- Best Cocktail Bar - Mr Fogg's
- Best Restaurant Experience - Scott's
- Best Independent Jewellers - Hancocks
- Best Showroom Design - Dior
- Best Public Space - Grosvenor Square Gardens
- Best Display of Craftsmanship - Smythson
- Best Local Event - Mount Street Christmas Lights
- Best Charitable Initiative - Emma Willis and Style for Soldiers
- Best New Opening - Manolo Blahnik
- Best Sustainability Initiative - The Brown's Hotel and its partnership with CleanConscience
- Local Hero Award - The Street Cleaners of Mayfair
- Outstanding Contribution to Mayfair - The Residents' Society of Mayfair and St James's



04-05 UNIQUELY LONDON SEASONAL EVENTS



06



DIARY DATES

Preserving London's sense of tradition, the Gentlemen's Clubs in and around Mayfair are among the most renowned.

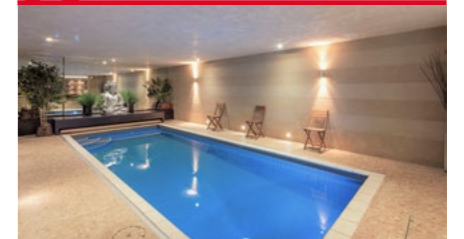
07



FEATURED PROPERTY AND NEW CHELSEA OFFICE

Preserving London's sense of tradition, the Gentlemen's Clubs in and around Mayfair are among the most renowned.

08



SWIMMING POOLS

Preserving London's sense of tradition, the Gentlemen's Clubs in and around Mayfair are among the most renowned.

09



CHASE AWAY THE WINTER BLUES & OLYMPIA HORSE SHOW

Preserving London's sense of tradition, the Gentlemen's Clubs in and around Mayfair are among the most renowned.

10



NEW YEAR'S EVE IN MONACO

Preserving London's sense of tradition, the Gentlemen's Clubs in and around Mayfair are among the most renowned.

11



MONACO PROPERTIES

Preserving London's sense of tradition, the Gentlemen's Clubs in and around Mayfair are among the most renowned.

12-18



LONDON PROPERTIES

Preserving London's sense of tradition, the Gentlemen's Clubs in and around Mayfair are among the most renowned.

PERSPECTIVES is a registered trademark © Pastor Real Estate Limited 2017 and may not be used without express permission. Perspectives is published four times a year: Spring, Summer, Autumn and Winter by Pastor Real Estate. All content is the copyright of Pastor Real Estate Limited, unless subject to the rights of a third party, and use without express written permission from the publisher is forbidden. The views and opinions expressed in Perspectives are not necessarily those of Pastor Real Estate and Pastor Real Estate accepts no liability for loss or damages however arising as a result of action taken or not taken in reliance upon information published. Material sent to the title or Editor is deemed to be supplied for publication. For all editorial enquiries, please contact lise@relevancewebsite.com

Sales
11 Curzon Street
LONDON
W1J 5HJ United Kingdom

T +44 (0)20 3867 7845
F +44 (0) 20 3195 9596
E sales@pastor-realestate.com
www.pastor-realestate.com

Lettings
48 Curzon Street
LONDON
W1J 7UL United Kingdom

T +44 (0)20 3867 7845
F +44 (0) 20 3195 9596
E contact@pastor-realestate.com
www.pastor-realestate.com



LONDON | MONACO

UNIQUELY LONDON SEASONAL EVENTS

Each December, as the nights grow longer and the chill in the air gets more pronounced, London prepares to celebrate Christmas and the coming of a New Year.

Here are some of the very best things to do in December in Prime Central London.

Switching on the Christmas Lights A Special Shepherd Market Tradition

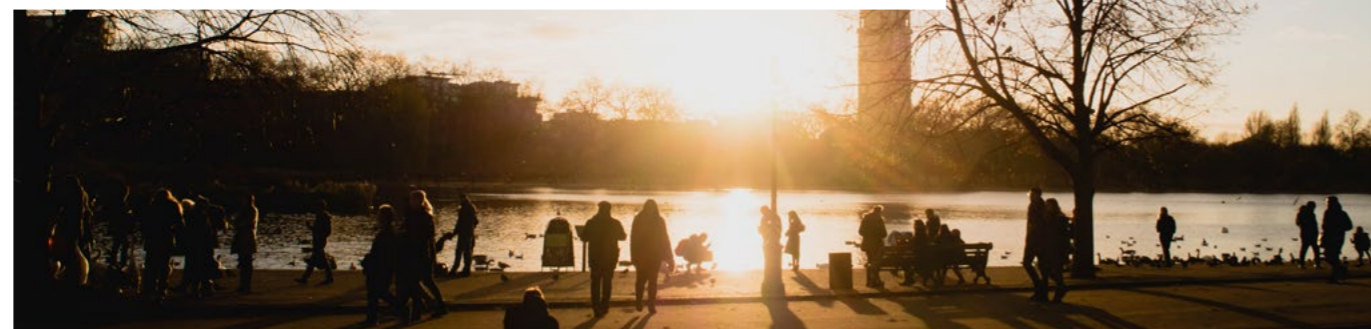
In the exclusive, village-like surrounds of Mayfair, one of the most beloved holiday traditions each year involves the switching on of the Christmas lights in Shepherd Market, a charming niche tucked away from the hustle and bustle of London. Bordered by Curzon Street on one side and Piccadilly and Green Park on the other, Shepherd Market invites visitors and residents to step back in time. They can browse through its high-end boutiques and galleries, share a drink or two in its Victorian pubs or well-stocked wine bar, or savour a meal at one of the well-frequented restaurants that line its cosy streets. At Christmastime, this hidden area nestled in the very heart of Mayfair becomes even more enticing, with its twinkling Christmas lights hovering overhead.

This year, the official ceremony marking the switching on of the Shepherd Market Christmas lights will take place on Thursday, 7th December. Pastor Real Estate is once again delighted to act as the main sponsor for this event, with the support of at least 60 retailers, residents

and traders from the area. *"For so many residents of and visitors to Mayfair, the switching on of the Christmas lights in Shepherd Market signals the true beginning of the Christmas period,"* says David Lee, Head of Sales at Pastor Real Estate. *"At Pastor Real Estate, we're thrilled to be able to help welcome Christmas each year in this way."* Families, couples and all those who like to drink in some Christmas cheer will find something to enjoy at this eagerly anticipated annual function.

John Cleese, a famed founding member of legendary comedy crew Monty Python and one of the UK's most loved comedians and satiric voices, will act as the guest of the honour and perform the vital, ceremonial role of switching on the lights. Both before the lights have been lit and afterwards, revellers can wander through Shepherd Market, enjoying cups of warm mulled wine, delicious delicacies and Christmassy treats, provided by local establishments, such as L'Eto Caffe and Kitty Fisher's while enjoying Christmas carols and other seasonal performances.

Best of all, this celebration also offers Christmas cheer and hope to many less-fortunate Londoners. The Shepherd Market Association and Pastor Real Estate are once again dedicating support from this ceremony to the well-respected charity of St Mungo's, which works to help end homelessness. Support from this event will also go towards fundraising for St George's of Hanover Square Primary School. *"It is so heartening to know,"* says David Lee, *"that, through this wonderful Christmastime event in Shepherd Market, Londoners in need will also be able to receive help. Being able to offer support from this occasion makes it even more special and epitomises the true Christmas spirit."*



Peter Pan Cup in Hyde Park

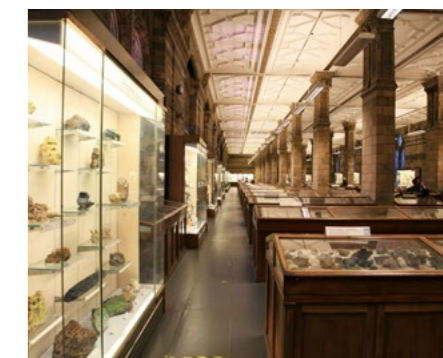
Each year on Christmas morning, members of the Serpentine Swimming Club participate in a unique tradition that is not for the faint of heart. They take part in the Peter Pan Cup, a 100-yard race through the icy December waters of the Serpentine Lake. Should you be interested in watching, head over to Hyde Park at 9:00 am on December 25th and look on in awe as these fearless swimmers brave the chilly waters to celebrate the season in their own memorable way. To find out more, visit: www.serpentineswimmingclub.com



Christmas Sleepover at the Natural History Museum

What could be more exciting and educational, for children aged seven to 11, than to have the chance to spend a night at London's Natural History Museum, surrounded by scientific discoveries and, best of all, dinosaurs? Kids (and parents too) will be able to experience a Christmas-themed sleepover at the National History Museum, which will be decked out in holiday finery for December. During this special event, which will take place on

Saturday 9th December, children will be able to, among other activities, discover a T-Rex lurking in the shadows; create a dinosaur t-shirt; learn more about these huge animals that once roamed the earth from a museum scientist; enjoy a Christmas carol performance; and meet reindeer. Then, once it's time to settle down for the night, everyone will nod off to sleep beneath the famous blue whale skeleton in Hintze Hall. Find out more and book in advance at: www.nhm.ac.uk



London New Year's Eve Fireworks

For those who like to bid farewell to the old year and ring in the new one with great fanfare, London's New Year's Eve Fireworks celebration might prove too good to miss. This year, as Big Ben dramatically tolls midnight (coming out of its temporary renovation-related retirement just for this special occasion), more than 12,000 fireworks will illuminate the night sky over Westminster. This spectacular pyrotechnical display

set off on the river Thames will bathe the Houses of Parliament, Westminster Abbey and the London Eye in vividly coloured light. If you would like to welcome in 2018 with fireworks, go to get your tickets. Then, on Sunday 31st December, make your way over to the Victoria Embankment to stake out a spot with the very best view. And, don't forget to wrap up warmly, as you bring in the New Year in dazzling style. www.london.gov.uk



DIARY DATES FOR WINTER 2017-2018

A Christmas Carol Service

Tuesday 12th December 2017
The Mayfair & St. James's Association invites you to carols, mulled wine, and mince pies at St. James's church to put you into a festive mood.
www.mayfairstjames.london

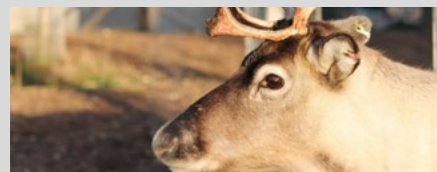


Handel House Christmas Showcase

Thursday 21st December
Handel House invites you to its end-of-year showcase at St George's Hanover Square, presenting solo and ensemble performances.
www.handelhendrix.org

Christmas Breakfast at the London Zoo

Thursday 21st - Sunday 24th December
Sneak into the London Zoo before opening time and take your kids to meet Santa and his reindeers over a sumptuous breakfast.
www.zsl.org



The Mayfair Antiques and Fine Art Fair

Thursday 4th - Sunday 7th January
Discover the world of fine art and antiques in the stunning surroundings of the London Marriott Hotel Grosvenor Square at the heart of Mayfair.
www.mayfairfair.com

London Winter Run

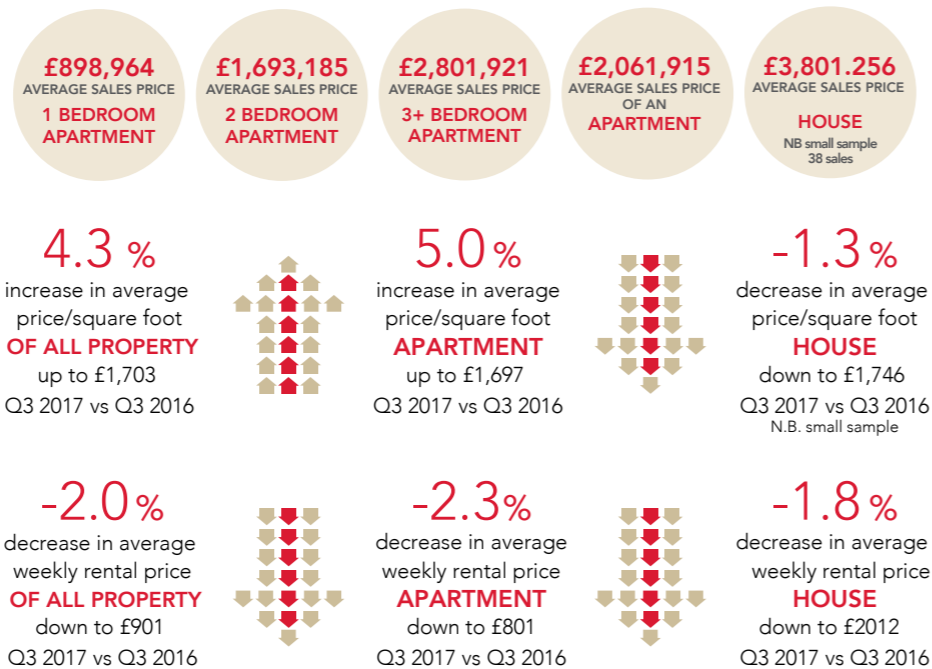
Sunday 4th February
Get out your running shoes and join the 16,000 runners along a course of 10 kilometres fundraising for Cancer Research UK.
www.londonwinterrun.co.uk

Chinese New Year Parade

Friday 16th February
From dragon dances to drumming, discover London's multicultural side and welcome the year of the dog.
www.chinatown.co.uk



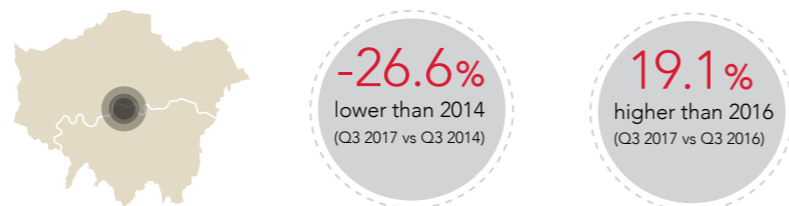
PRIME CENTRAL LONDON AT A GLANCE SW1, SW3, SW7, SW10, W1 (Q3 2017 v Q3 2016)



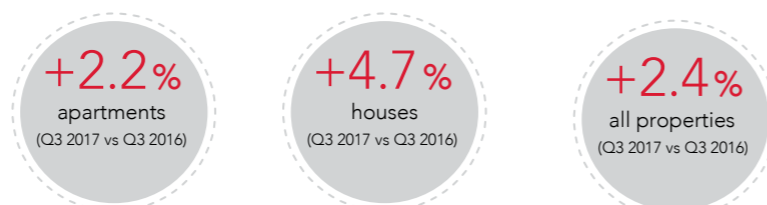
MAYFAIR MARKET - W1J and W1K Sales in the last 2 quarters Q2 2017 and Q3 2017

	Lowest Price	Highest Price	Average Price	Number of Sales	Average £psf
Houses	£1,275,000	£14,800,000	£8,500,000	3	£2,557
Flats	£200,000	£25,600,000	£4,200,000	35	£2,427

PRIME CENTRAL LONDON TRANSACTION VOLUMES



PRIME CENTRAL LONDON RENTAL TRANSACTION VOLUMES



Source: LonRes / dataloft

UK HOUSING MARKET



Source: UK House Price Index (Land Registry, Office National Statistics, Valuation Office Agency, Registry of Scotland).

FEATURED PROPERTY IN CHELSEA

CHELSEA GATE APARTMENTS, CHELSEA SW1. FOR FURTHER DETAILS, PLEASE CONTACT +44 (0) 20 3867 7845.

- Near sloane square
- 1 Master bedroom suite with walk-in wardrobe
- Further double bedroom with en-suite bathroom
- 24 Hour porter
- 1 Underground parking space
- Residents gym
- Pets permitted (subject to separate negotiation)
- Refurbished to high standard throughout
- Hard wood flooring
- Underfloor heating



"With Pastor Real Estate's wealth of experience and expertise in every aspect of the luxury real estate market,"

NEW CHELSEA OFFICE

2017 has been a milestone year for the real estate market in Mayfair and Prime Central London. Pastor Real Estate has taken full advantage of the strong interest in this highly prized area, a fact that was underscored over the past year, when it opened a dedicated Sales Office at 11 Curzon Street to accompany its existing office at 48 Curzon Street.

As 2018 approaches, Pastor Real Estate foresees even greater possibilities for growth in the Prime Central London market, with the areas of South Kensington and Chelsea particularly poised to enjoy a marked expansion. Indeed, this area contains some of London's most desirable and valuable real estate, due to its highly regarded profile and infrastructure such as new schools and residential developments that provide long term investment security.

In order to better capitalise on and serve this prestigious and ever expanding market, Pastor Real Estate is pleased to announce the opening of a Chelsea office at 8 Elystan Street, SW3 3NS. Senior Sales Negotiator, Philip Cook, who joined the Pastor Real Estate Sales Team in June 2017, will be accompanied by Senior Lettings Negotiator, Elisabeth

Erard, at the new Pastor Real Estate Chelsea office.

Philip will draw on his nearly nine years of experience in the Kensington and Chelsea markets to bring new business and instructions to Pastor Real Estate's portfolio. "With Pastor Real Estate's wealth of experience and expertise in every aspect of the luxury real estate market," Philip comments, "we are expecting to make a substantial mark in the sought-after areas of South Kensington and Chelsea due to the variety of property services we offer as an agency. The company has a proven track record of delivering results and exceeding the expectations of our clients, which in itself is rewarding for both the business and the client. South Kensington and Chelsea continues to be a reliable target area for families, professional couples and investors."

Elisabeth Erard, who brings a wealth of lettings experience in Kensington and Chelsea remarks, "We are very excited by the opportunity of expanding our company to this area of London and look forward to developing professional relationships with clients and customers in the area, as well as offering support to the local community."

A RARE RESIDENTIAL FEATURE LONDON'S BEST SWIMMING POOLS

One of the most exclusive and distinctive features that any Prime Central London residence can boast is usually invisible to outsiders. Most often concealed out of sight in a basement, or on the rooftops of the few homes that possess it, this coveted and rare London architectural embellishment, of course, is a swimming pool.

In an article for *The Telegraph*, columnist Sonia Purnell's description of a pool hidden beneath a Mayfair mews house exemplifies the exclusivity associated with having a private swimming pool in London, referring to it as "an extraordinary tribute to the lavish style of a very different age." She suggests that residential swimming pools, such as this one and the few that quietly adorn the most sumptuous London homes "have become the ultimate status symbol." Whether this assertion stands, having a private swimming pool in one's home, especially in Prime Central London, is the exception, not the norm.

This is primarily due to the design difficulties and prohibitive cost associated with installing a swimming pool in Prime Central London. Here, space is always at a premium and many listed homes are subject to strict building codes. The mere existence of a pool in a home in Mayfair or Chelsea and Kensington, in most cases, is only possible through feats of architectural design often verging on minor miracles.

This stems from the challenges involved in creating beautiful and functional pools within some of the most sought-after properties in the world.

As a result, the opportunity to own or let a house in Prime Central London with a swimming pool remains limited to a small and exclusive group.

After all, not many can take a dip in their very own heated pool beneath the glowing night sky, or complete an invigorating early-morning workout as the London commute gears up outside their walls.

The following examples of swimming pools, set in residences offered for sale or let by Pastor Real Estate, highlight the sheer creativity that has gone into their design and construction.

CHEYNE PLACE, ROYAL HOSPITAL ROAD, CHELSEA Stunning Use of Natural Light

This pool showcases an ingenious set of architectural and engineering features that seamlessly incorporate the swimming area into the overall interior design of the home, while natural light illuminates the water.

A large semi-circular glass skylight covers half the ceiling above the pool and an artfully designed dome wall allows ambient light to filter in from the garden above. Set beneath a charming seating area, which opens out into the rear garden, the sleek

marble-clad pool area maximises this natural light. Also offering a sauna, this unique architectural feature allows its owners to enjoy the health and lifestyle benefits of swimming.

CLEVELAND SQUARE, BAYSWATER, LONDON Classic Indoor

In more conventional style, this private indoor pool lies in the basement beneath the residence's lavish living space, situated near Hyde Park. Those who call this pied-à-terre in Bayswater home can delight in a refreshing and relaxing swim anytime.

With its mirrored wall and surrounding greenery, this area's design aspects evoke the experience of swimming in warmer climes. The private sauna enables residents to enjoy the wellbeing effects of combining the sauna's steam with a cooling dip. Residents can also use this pool area to craft a bespoke, spa experience that they can enjoy within the comfort of their own home.

THE LANCASTERS, BAYSWATER, LONDON Sleek Lap Pool

Set within the confines of an exceptional, award-winning development in Lancaster Gate, located just east of Notting Hill, this pool's design perfectly melds form and function. With clean lines, glossy walls and recessed lighting, every element of this pool area has been created expressly to enhance the swimming experience.

This is further reinforced by a state-of-the-art gym and steam room. All of these features, especially the gleaming lap pool, could certainly be found in a five-star hotel or top-of-the-line fitness centre. Instead, these superb spa facilities and ingeniously constructed pool are situated within this renowned complex. They are conveniently accessible to any resident who cares to work out at their own convenience, regardless of whether the rest of London sleeps or conducts its regular business.

ONE KENSINGTON GARDENS, LONDON Olympic Style Training

With its spare layout and clean lines, this pool could easily serve as a regulation size Olympic style training pool. Those interested in swimming laps as part of a fitness regimen, or when training for competitions, would be well served by this 25-metre pool with its smooth marble walls, floors and columns.

Set within the luxurious One Kensington Gardens development, in the heart of Kensington, this functional pool forms part of the development's world class spa facilities. A private fitness centre, sauna and steam room combined with one of the longest pools in London create a facility that certainly rivals the most upscale health clubs. Residents can choose to tone, flex, stretch and swim whenever the mood takes them.



CHASE AWAY THE WINTER BLUES THINGS TO DO IN JANUARY IN LONDON

Once the Christmas lights have all been taken down, it can seem a bit gloomy to contemplate the months of winter that still lie ahead before the arrival of springtime blooms. But, for those prone to January blues, here are a few things that London has to offer in the first month of the year.

Burns Night Celebrations

Each year on the 25th of January people all around the British Isles get together to commemorate the life and work of one of Scotland's greatest poets, Robert Burns, who was born on this date in 1759. Customary celebrations include ceilidhs, dinners and - something that London does really well - whisky tastings. For those who would like to join in the festivities by savouring a glass or two of Scotland's finest amber elixir, Prime Central London boasts a selection of bars that offer premium whiskies. Revellers can head to Mayfair's Connaught Bar and allow the knowledgeable bar staff to recommend aged single malts to suit even the most demanding palate. Although it might seem counterintuitive, the American Bar at the Stafford Hotel, tucked away down a side street between St James's Palace and Green Park, offers an impressive array of Scottish whiskies. Finally, amidst the sleek décor of Brown's Hotel's Donovan Bar, whisky aficionados will truly be spoiled for choice, with 17 single malts and a variety of blends on offer, more than enough to bring a hint of cheer into the fledgling year.

Find out more: www.the-connaught.co.uk

www.thestaffordlondon.com

www.roccofortehotels.com

Skiing at Chel-ski

For many, the ideal answer to the winter doldrums would include spending several blissful days schussing down pistes in the Alps or on the slopes of Aspen. But, if obligations make that impossible, there's now a way for ski and snowboard lovers to experience the next best thing right in Prime Central London. Located in the heart of Chelsea, Chel-Ski, London's largest indoor ski centre, bills itself as the place "where London meets the mountains." Whether you're a complete beginner or an advanced skier or snowboarder unafraid of the black diamond slopes and anxious to work on your form, Chel-Ski's state-of-the-art indoor slopes and expert instructors will help make sure that you imagine yourself

in the fresh mountain air. And, should the mood strike after an invigorating session on the slopes, head to Chel-Ski's Alpine Bar and indulge in a little après ski activity. For more information, visit: www.chel-ski.uk.

Lumiere London 2018

Surely, there could be no better antidote to the long winter nights than the Lumiere Light Festival. Back for its second year in a row, Lumiere London 2018 will take place on 18th-21st January. This event will feature contributions of over 40 artists from around the UK and across the world. The festival will use innovative and ingenious light displays to transform some of London's most iconic buildings,

architectural sites and streets. For four evenings in January, Lumiere will turn London into a sparkling nighttime art exhibition.

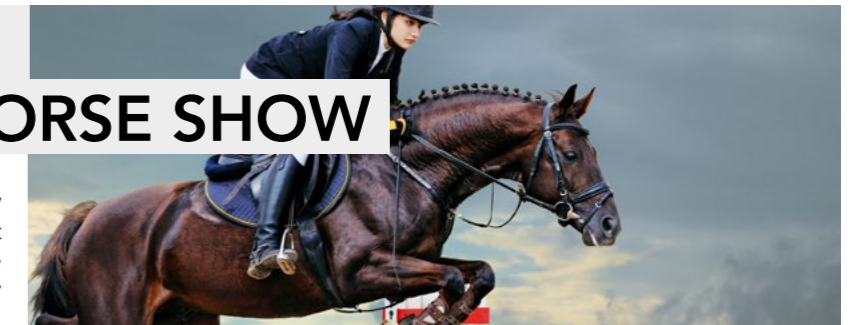
Among the many spectacular exhibitions planned for Lumiere, one that is already generating buzz is a commission by artist and lighting designer, Simon Corder. Corder's creation, entitled, *Bough 3* in Mayfair, will showcase tubes of fluorescent light climbing up the façade of a Mayfair building, intertwining through and around ornate decorations in the brickwork and washing it in a gentle blue light. Learn more at: www.visitlondon.com/lumiere

SADDLE UP FOR THE OLYMPIA HORSE SHOW

First held in 1907, the Olympia Horse Show has long constituted an anticipated event on London's sporting calendar. In the past, formally dressed members of the nobility attended the iconic equestrian meet, which was held in a setting adorned with chandeliers and floral arrangements. Celebrating a staple of British tradition, the horse show retains a glamorous sense of prestige and is enjoyed by eminent guests, including the duchess of Cornwall. Today, it is an event that is open to everyone, from the most avid horse enthusiast to those that are simply curious to see what 'carriage driving' entails.

Just a short distance from Prime Central London, the Olympia Exhibition Centre is set to welcome approximately 90,000 guests from 12th-18th December for a week of competitive riding and equestrian displays, as part of the most celebrated event of its kind in the UK.

Indeed, it is the only horse show in the country to host all three FEI World Cup Qualifiers: dressage, show jumping,



and carriage driving. With the hope of qualifying for the World Cup, competitors will put their skills to the test in front of over 7,500 spectators.

The Olympia Horse Show 2017 will also see a range of display acts to complement the week's competitions. For the first time in the event's history, the Chilean Huasos - famous Chilean performance riders - will take to the arena in traditional attire, staging their skills which demonstrate a harmonious relationship between man and horse. Another of the event's highlights will see the famous jockey, Frankie Dettori, compete in a show jumping event. Horses will not be the only animals to take to the arena, however: dog agility competitions will bring canines into the spotlight on the Friday afternoon.

Day tickets to the event start from £20, while top-priced tickets start from £40.80. www.olympiahorseshow.com

A MEMORABLE COUNTDOWN: NEW YEAR'S EVE IN MONACO

New Year's Eve is a time for festive celebrations to be remembered and hopeful resolutions that are sure to be forgotten. Spirits are high, as fireworks light the night's sky to symbolise the start of a new chapter. For discerning travellers with a penchant for luxury, the Principality of Monaco beckons on New Year's Eve, promising fine restaurants, indulgent hotels, and a busy programme of events for families, friends, and couples alike. Follow one of these three itineraries for a memorable countdown to 2018 in Monaco.

AN EVENING AMONG FRIENDS

For groups of friends, Monaco guarantees an elegant night of revelry. With a number of chic bars, nightclubs, casinos, and hotels on offer in the Principality, you are sure to usher in the new year in style.

If relaxation is in order after a few too many indulgences at Christmas, start your day at the Thermes Marins Monte-Carlo – a tranquil spa in the heart of town. From the heated saltwater swimming pool, which boasts massage jets to help visitors unwind, admire a panoramic view of the Mediterranean Sea. The spa's large sun terrace looks out over Port Hercules and benefits from a Jacuzzi. End the experience with a table shower massage to rejuvenate fully before a busy evening.

For dinner, sample the famous cuisine at Nobu, set on the ground floor of the Fairmont Hotel. From the restaurant's scenic balcony, diners can admire views of three countries: Monaco, France, and Italy. Rivalling the scenery for the attention of guests, the sumptuous menu, designed by renowned Chef Nobu Matsuhisa, dazzles the taste buds and delights the eyes.

AN EVENING FOR TWO

Whether it is the beguiling show of Christmas lights, the promise of high luxury, or the remarkable Mediterranean setting, the allure of Monaco makes it the perfect destination for couples.

After exploring the quaint streets of the Old Town in the afternoon for some shopping, make your way to the Belle Epoque room at the Hotel Hermitage for a romantic dinner for two. Be sure to book in advance, as the charm of the classic setting has established this restaurant as one of the finest in the Principality. A special dinner menu for New Year's Eve costs €520, and comprises of five courses, musical entertainment, and a raffle of Monegasque proportions.

To conclude the night, head to the Casino Square to watch the firework display at midnight and reflect on an unforgettable New Year's Eve in Monaco.

FAMILY FUN

Each December, Monaco is adorned with colourful lights and the Principality sparkles red and white. The festive mood brings the community together as a new year draws in. The iconic Casino Square is transformed into a winter wonderland, with a new theme each year; in 2016, a magical ski resort evoked a sense of escapism, transporting visitors to a picturesque alpine setting. Start your New Year's Eve by admiring the splendour of the decorations with your children.

Build up an appetite by exerting your energy on the ice rink by Port Hercules. The 1,000m² rink takes the place of the swimming pool in the Rainier III Nautical Stadium and lasts from early December until early March. For young children, there is a smaller rink too.

Lured by the scent of mulled wine and hot, hearty snacks, continue on to the Christmas Village. Traditional-looking wooden chalets offer regional products and authentic culinary specialities. For a panoramic view of Port Hercules, enjoy a ride on the Ferris wheel.

A favourite among the families of Monaco, Stars 'n' Bars is just a short walk around the harbour and beckons with its American-style décor and sumptuous menu. Most wall space is covered with sports memorabilia; there is even a full-sized Formula One car on display to entertain your kids while you enjoy a well-deserved drink! To mark the occasion, Stars 'n' Bars will treat guests to a firework display at midnight, so wrap up warm and enjoy the show.

VISIT THE NEW PASTOR IMMOBILIER OFFICE

Pastor Immobilier invites you to discover the comprehensive range of property services available at our new office. Come and meet the Pastor Immobilier team at Le Formentor, 27 avenue Princesse Grace, MC 98000 Monaco.



TO LET: GLOUCESTER SQUARE, HYDE PARK, W2

£2,250 PER WEEK

3 Double Bedrooms | 3 Bath/Shower Rooms | Impressive Dual Aspect Reception Room | Eat-in Kitchen | Private Garden Square

An outstanding apartment on Gloucester Square with access to private gated gardens. This striking property offers 1959sqft (182sq.m) of living and entertaining space with high specification finishes to compliment the tasteful decor, superb furnishings, high ceilings and full height windows. The magnificent double reception room is ideal for entertaining and the fully fitted eat-in kitchen leads to a private patio and entrance to the street.



FOR SALE: MIXED USE INVESTMENT FOR SALE: SHEPHERD MARKET, MAYFAIR, W1J £2,150,000 VIRTUAL FREEHOLD

Mixed-Use | Retail Unit & 1 Newly Developed Apartment | Virtual Freehold

A rare opportunity to acquire a fully-let, mixed-use investment property in the heart of Shepherd Market. The retail unit is spread over ground and basement with a stunning one bedroom duplex apartment benefiting from its own entrance on the upper floors. The apartment has been refurbished to a very high specification by the current owner and includes a custom designed Italian kitchen with granite counter.



FOR SALE: GLOUCESTER SQUARE, HYDE PARK, W2 £2,250 PER WEEK

3 Double Bedrooms | 3 Bath/Shower Rooms | Impressive Dual Aspect Reception Room | Eat-in Kitchen | Private Garden Square

An outstanding apartment on Gloucester Square with access to private gated gardens. This striking property offers 1959sqft (182sq.m) of living and entertaining space with high specification finishes to compliment the tasteful decor, superb furnishings, high ceilings and full height windows. The magnificent double reception room is ideal for entertaining and the fully fitted eat-in kitchen leads to a private patio and entrance to the street.

FOR SALE: MIXED USE INVESTMENT FOR SALE: SHEPHERD MARKET, MAYFAIR, W1J £2,150,000 VIRTUAL FREEHOLD

Mixed-Use | Retail Unit & 1 Newly Developed Apartment | Virtual Freehold

A rare opportunity to acquire a fully-let, mixed-use investment property in the heart of Shepherd Market. The retail unit is spread over ground and basement with a stunning one bedroom duplex apartment benefiting from its own entrance on the upper floors. The apartment has been refurbished to a very high specification by the current owner and includes a custom designed Italian kitchen with granite counter.



TO LET: MIXED USE INVESTMENT FOR SALE: SHEPHERD MARKET, MAYFAIR, W1J

£2,150,000 VIRTUAL FREEHOLD

Mixed-Use | Retail Unit & 1 Newly Developed Apartment | Virtual Freehold

A rare opportunity to acquire a fully-let, mixed-use investment property in the heart of Shepherd Market. The retail unit is spread over ground and basement with a stunning one bedroom duplex apartment benefiting from its own entrance on the upper floors. The apartment has been refurbished to a very high specification by the current owner and includes a custom designed Italian kitchen with granite counter.



TO LET: GLOUCESTER SQUARE, HYDE PARK, W2

£2,250 PER WEEK

3 Double Bedrooms | 3 Bath/Shower Rooms | Impressive Dual Aspect Reception Room | Eat-in Kitchen | Private Garden Square

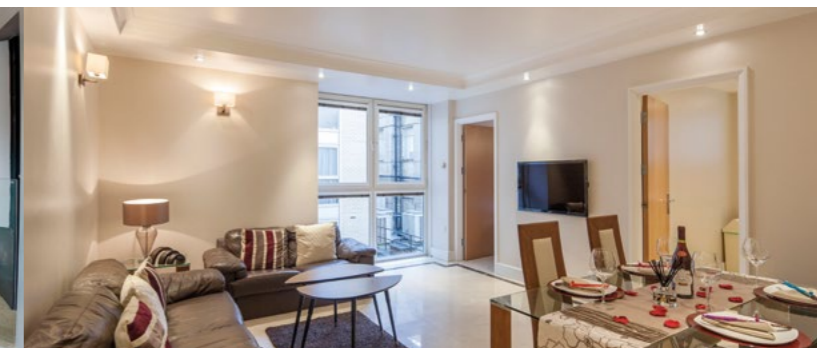
An outstanding apartment on Gloucester Square with access to private gated gardens. This striking property offers 1959sqft (182sq.m) of living and entertaining space with high specification finishes to compliment the tasteful decor, superb furnishings, high ceilings and full height windows. The magnificent double reception room is ideal for entertaining and the fully fitted eat-in kitchen leads to a private patio and entrance to the street.

TO LET: MIXED USE INVESTMENT FOR SALE: SHEPHERD MARKET, MAYFAIR, W1J

£2,150,000 VIRTUAL FREEHOLD

Mixed-Use | Retail Unit & 1 Newly Developed Apartment | Virtual Freehold

A rare opportunity to acquire a fully-let, mixed-use investment property in the heart of Shepherd Market. The retail unit is spread over ground and basement with a stunning one bedroom duplex apartment benefiting from its own entrance on the upper floors. The apartment has been refurbished to a very high specification by the current owner and includes a custom designed Italian kitchen with granite counter.



TO LET
 CURZON STREET, MAYFAIR, W1J
 £995 PER WEEK

2 Bedroom Duplex | Quiet Location | Private
 Balconies | Solid Wood Floors | Dual Aspect
 Reception | Passenger Lift

TO LET
 CURZON STREET, MAYFAIR, W1J
 £995 PER WEEK

2 Bedroom Duplex | Quiet Location | Private
 Balconies | Solid Wood Floors | Dual Aspect
 Reception | Passenger Lift

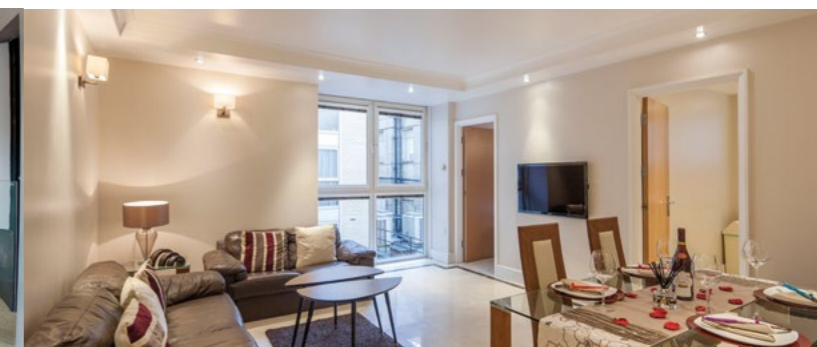


TO LET
 CURZON STREET, MAYFAIR, W1J
 £995 PER WEEK

2 Bedroom Duplex | Quiet Location | Private
 Balconies | Solid Wood Floors | Dual Aspect
 Reception | Passenger Lift

TO LET
 CURZON STREET, MAYFAIR, W1J
 £995 PER WEEK

2 Bedroom Duplex | Quiet Location | Private
 Balconies | Solid Wood Floors | Dual Aspect
 Reception | Passenger Lift



TO LET: GLOUCESTER SQUARE, HYDE PARK, W2

£2,250 PER WEEK

3 Double Bedrooms | 3 Bath/Shower Rooms | Impressive Dual Aspect Reception Room | Eat-in Kitchen | Private Garden Square

An outstanding apartment on Gloucester Square with access to private gated gardens. This striking property offers 1959sqft (182sq.m) of living and entertaining space with high specification finishes to compliment the tasteful decor, superb furnishings, high ceilings and full height windows. The magnificent double reception room is ideal for entertaining and the fully fitted eat-in kitchen leads to a private patio and entrance to the street.

TO LET
 CURZON STREET, MAYFAIR, W1J
 £995 PER WEEK

2 Bedroom Duplex | Quiet Location | Private
 Balconies | Solid Wood Floors | Dual Aspect
 Reception | Passenger Lift

TO LET
 CURZON STREET, MAYFAIR, W1J
 £995 PER WEEK

2 Bedroom Duplex | Quiet Location | Private
 Balconies | Solid Wood Floors | Dual Aspect
 Reception | Passenger Lift



TO LET: GLOUCESTER SQUARE, HYDE PARK, W2

£2,250 PER WEEK

3 Double Bedrooms | 3 Bath/Shower Rooms | Impressive Dual Aspect Reception Room | Eat-in Kitchen | Private Garden Square

An outstanding apartment on Gloucester Square with access to private gated gardens. This striking property offers 1959sqft (182sq.m) of living and entertaining space with high specification finishes to compliment the tasteful decor, superb furnishings, high ceilings and full height windows. The magnificent double reception room is ideal for entertaining and the fully fitted eat-in kitchen leads to a private patio and entrance to the street.

48 CURZON STREET

Pastor Real Estate, 48 Curzon Street,
LONDON, W1J 7UL United Kingdom
T +44 (0)20 3867 7845
F +44 (0)20 3195 9596
E contact@pastor-realestate.com

PROPERTY MANAGEMENT



BARRY DALY
(MARLA)
Head of Property

INVESTMENT



CHRISTOPHER MITCHELL
Head of Investment

DEVELOPMENT



FANNAR HARALDSSON
(MA ARCH, BA ARCH)
Head of Development

LETTINGS



SUSAN COHEN
(MARLA)
Head of Lettings



SPENCER TAFFURELLI
(MNAEA MARLA)
Senior Lettings Negotiator



NEW PERSON
Senior Lettings Negotiator



LOUIZA SYMEOU
Lettings Team Administrator



CORINNA WINTJEN
Office Administrator



SOFIE KOFOD
Sales Team Administrator

11 CURZON STREET

Pastor Real Estate, 11 Curzon Street,
LONDON, W1J 5HJ United Kingdom
T +44 (0)20 3867 7845
F +44 (0)20 3195 9596
E sales@pastor-realestate.com

SALES



DAVID LEE
Head of Sales



SEBASTIAN GREENWOOD
Senior Sales Negotiator



SIMON GREEN
Senior Sales Negotiator

8 ELYSTAN STREET

Pastor Real Estate, 8 Elystan Street,
CHELSEA, United Kingdom
T +44 (0)20 3867 7845
F +44 (0)20 3195 9596
E contact@pastor-realestate.com

SALES



PHILIP COOK
Senior Sales Negotiator



ELISABETH ERARD
Senior Lettings Negotiator



LONDON | MONACO



Pastor Real Estate,

48 Curzon Street
Mayfair, W1J 7UL

T: +44 (0)20 3867 7845

F: +44 (0) 20 3195 9596

E: contact@pastor-realestate.com

Lettings | Investment | Architecture | Consultancy
Commercial | Project Management | Property Management

Pastor Real Estate,

11 Curzon Street
Mayfair, W1J 5HU

T: +44 (0)20 3867 7845

F: +44 (0) 20 3195 9596

E: contact@pastor-realestate.com

Sales |



Pastor Real Estate,

8 Elystan Street,
Chelsea, SW3 3NS

T: +44 (0)20 3867 7845

F: +44 (0) 20 3195 9596

E: contact@pastor-realestate.com

Sales | Lettings



www.pastor-realestate.com

THE MAYFAIR
AWARDS 2017